

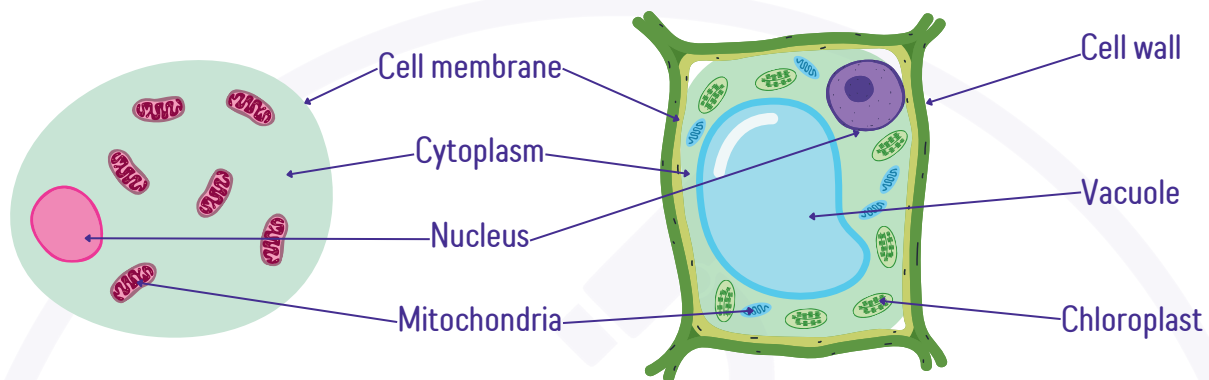
# CELLS AND THEIR FUNCTIONS

## Key Concepts

**Cells:** The basic unit of life found in all living organisms.

**Cell Parts:** Structures within cells that perform specific functions.

## Diagrams



## Key Facts to Remember

**Nucleus:** Controls cell activities and contains DNA (genetic material).

**Cytoplasm:** Jelly-like substance where chemical reactions happen.

**Cell Membrane:** Controls what enters and leaves the cell.

**Mitochondria:** The powerhouse of the cell, where energy is released during respiration.

**Ribosomes:** Make proteins needed for the cell.

**Plant Cell-Specific Parts:**

**Cell Wall:** Provides structure and support.

**Chloroplasts:** Contain chlorophyll for photosynthesis.

**Vacuole:** Stores nutrients and helps maintain cell shape.

## Quick Questions

1. Name three parts found only in plant cells.
2. What is the role of the mitochondria?
3. Which part controls the activities of the cell?
4. Where does photosynthesis take place?
5. What is the function of the cell membrane?

## Fun Fact

**Your body is made up of about 37 trillion cells! Each cell works like a tiny factory to keep you alive.**